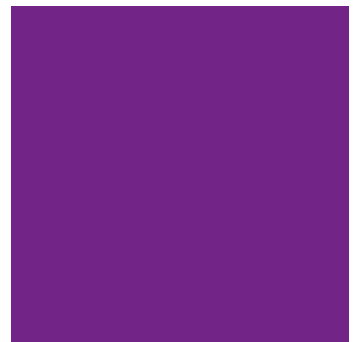
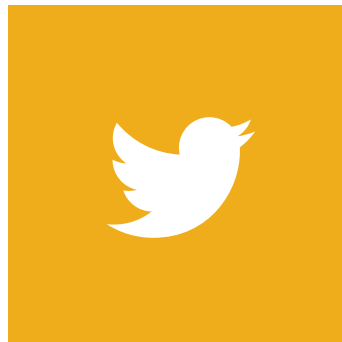


viewpoint

Nov 2016 – Issue 34

Bolsover
District Council



WELCOME

Welcome to the November issue of the Viewpoint newsletter which keeps you up to date with the results of Citizens' Panel surveys

In this issue:

- Local plan consultation

Results from the May 2016 survey on:

- Housing Ambition
- Recycling Information

Thank you to everyone who took the time to complete the May 2016 survey, the overall response rate was 39%.

Housing Ambition

Housing Ambition is a new project working across Bolsover, North East Derbyshire, Chesterfield and Derbyshire Dales. The project aims to prevent young people aged 16-24 becoming homeless and to streamline services for young people when homelessness cannot be prevented.

The Bolsover May Citizen's Panel was based around questions on Housing Ambition, getting the panel's views on homeless young people and the services available to them.

What you told us...

- » Most people (64%) felt that: "If someone is homeless the Council only has to provide somewhere for them to live in certain circumstances".
- » The overwhelming majority (93%) felt that children should be taught about household budgeting at school.
- » A further 82% believe that children should be taught about housing and homelessness at school.
- » People believe that homelessness is not necessarily due to drugs or alcohol, although both are believed to play a key part.
- » Opinion is generally split on whether youth homelessness is due to the person's own fault.
- » People generally agree that the Council should help young homeless people (48%), but a smaller percentage (36%) felt that they should provide housing to young homeless people.



**We speak
your language**

Polish

**Mówimy Twoim
językiem**

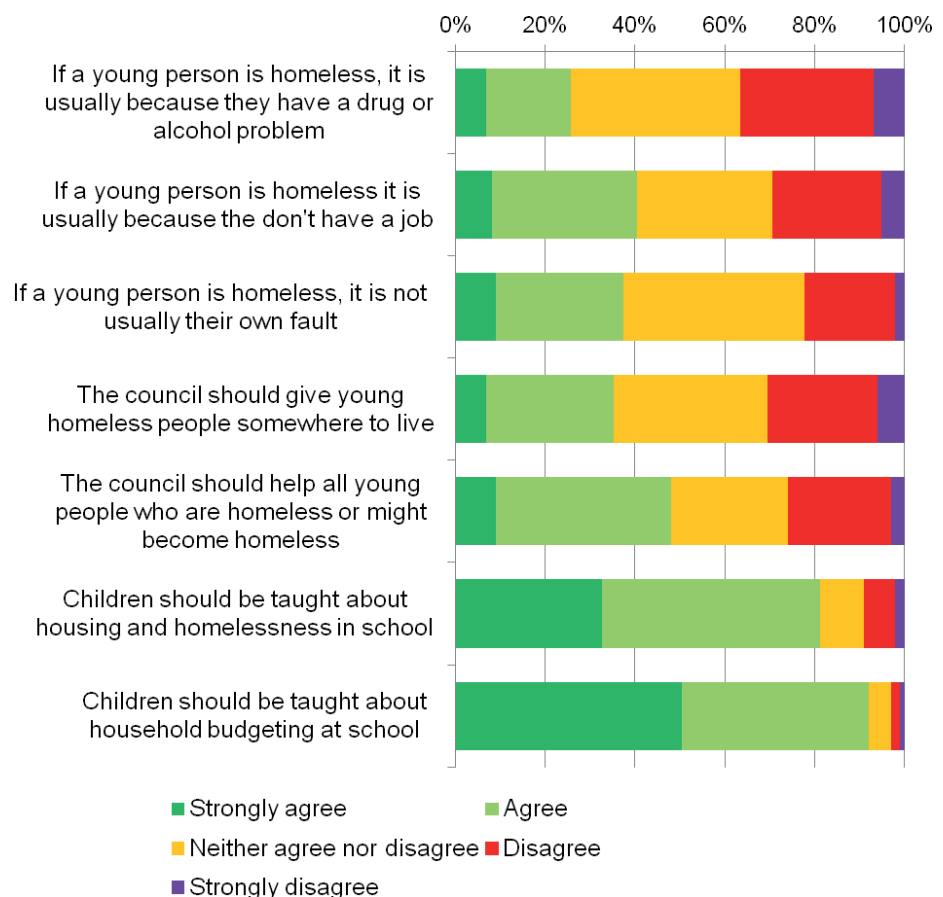
Slovak

**Rozprávame
Vaším jazykom**

Chinese

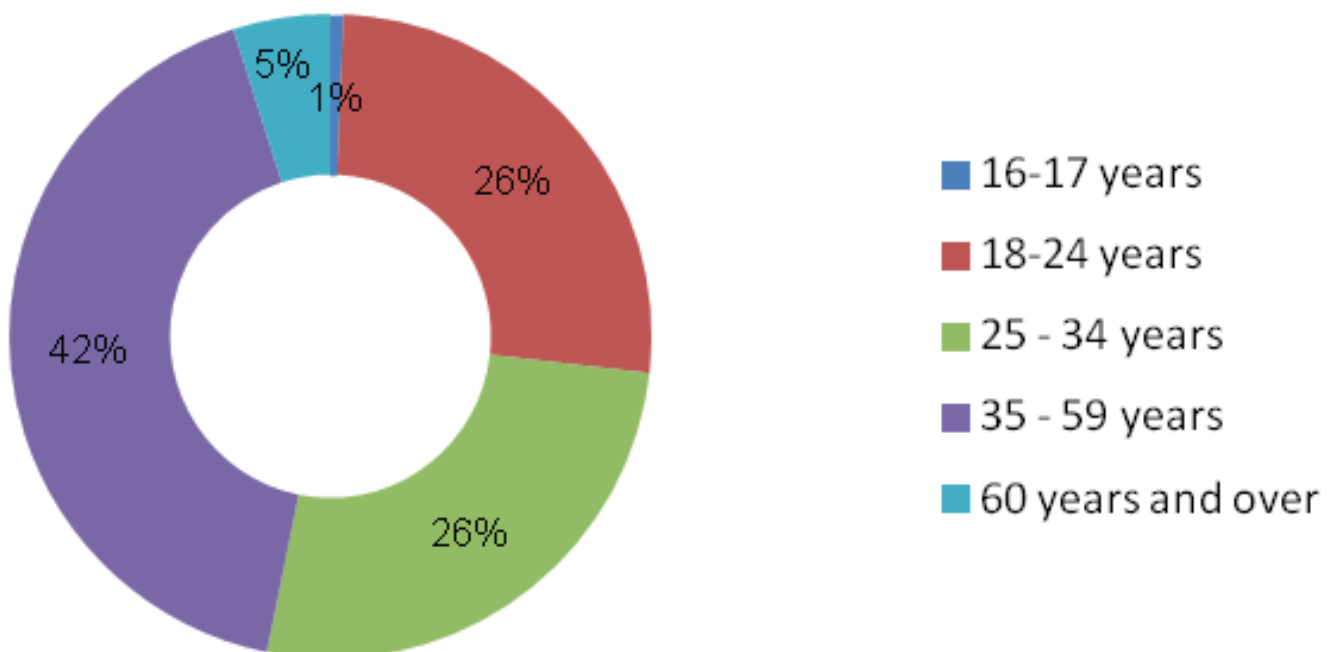
我们会说你的语言

If you require
this publication in
large print
or another format
please call us on
01246 242424



Current statistics show that 26% of people contacting the council to request assistance with homelessness are between the age of 18-24, with the same percentage being in the 25 – 34 age range. The 35 - 39 age range accounts for the majority of requests for assistance from the council.

Age of people approaching the council for assistance with homelessness



What we will do...

The Housing Ambition project will be delivered throughout Bolsover, North East Derbyshire, Chesterfield and Derbyshire Dales.

The information gained from the citizens panel will be fed into the projects steering group as part of our development of a county wide schools project to educate young people on the issues around homelessness. The planned future developments are to create a Hub or Single Point of Access and a housing pathway for young people and services to access advice and support and where appropriate housing. This Hub will act as the starting point for their journey down the pathway which will be dependent upon that individual person's needs.

It requires a partnership approach across a range of statutory and non statutory sectors including

voluntary and community sector partners. The main objective is usually to keep the young person accommodated within the family home where it is safe to do so however where it is not appropriate to do this we will seek other alternatives such as supported accommodated for example.

The main focus however is that we are a preventative service and attempt to resolve any conflict early, possibly through mediation, and establish a stable and safe environment for young people to live. We can then link this to employment, education and training support services to further develop their independence.

Recycling

In the last edition of Viewpoint, we gave an update on Streetscene Services. For this edition, Streetscene have helpfully produced answers to some commonly asked questions about recycling.

Recycling FAQ

Below are some of the frequently asked questions that the council receive. We have split up the information into material type, including plastic, metals, glass, paper and card and miscellaneous.

| Plastics | |
|---|---|
| What types of plastics can I recycle? | Plastic bottles, all food containers including pots, tubs, punnets and trays. Plastics NOT acceptable includes film, polystyrene, bubble wrap, plant pots and carrier bags. |
| Do I need to look at the recycling symbol on plastics? | The focus has moved to container type rather than plastic type. |
| Do I need to squash plastic bottles? | It's preferable as it increases space in your burgundy bin and collection vehicle. Please replace tops after squashing. |
| Can I recycle plastic bottle tops? | Yes. |
| Should lids be kept on or off plastic bottles when recycled or does that not matter? | It's preferable for lids to be placed back on plastic bottles after squashing them. |
| Can I recycle plant pots? | No , because the contractor collecting cannot accept this type of material. Plant pots can be re-used or taken to the household waste recycling centre. |
| What should I do with polystyrene? | Re-use where possible, otherwise place in general waste black bin. |
| Can I recycle the flimsy plastic trays and fruit punnets? | Yes , trays and punnets are accepted unless they are polystyrene. |
| Can I recycle black food trays? | Yes. |
| Can cleaning product bottles be recycled e.g. bleach bottles? Do triggers need to be removed and if so can they be recycled? | These bottles can be recycled, and the triggers can be left on the bottles. |
| Can I recycle plastic bags at kerbside? | No , plastic bags should be re-used as many times as possible otherwise place in general waste black bin. |

Metals

| | |
|---|---|
| Can aerosols be recycled? And, if so do the plastic tops/lids need to be removed and placed where? | Empty aerosols can be recycled. It is preferable to remove the plastic tops so the two materials are sorted separately in the recycling process. |
| Do I need to take the labels off tins/cans? | No , labels will be removed during the recycling process. It is helpful to do so if you wish. |
| Can I recycle foil and foil trays? | Yes , these are a valuable resource that can be recycled for car engines etc. Foil trays should be washed before recycling to remove contamination and should not be recycled if they have burnt on food. |

Glass

| | |
|--|---|
| Can I recycle Pyrex | No , this is a different type of glass treated to withstand high temperatures which makes it non recyclable. |
| Should I recycle glass bottle and jar lids and should these go in separately or does it not matter? | As the lids and bottles are two different materials, these should be separated before recycling. |
| Can I recycle glass perfume bottles and jars? | Yes . |

Paper and card

| | |
|--|---|
| Do I need to remove the window from envelopes before recycling? | No , but doing so is helpful to the recycling process. |
| Can I recycle shredded paper? | Yes . Shredded paper should be placed inside of the paper caddie preferably between other heavier paper to prevent the waste blowing around during the collection process. |

Miscellaneous

| | |
|---|---|
| Can 'Pringle' style containers be recycled? | No . Unfortunately these containers are not easily recycled, due to the complexity of their construction. |
| Do I need to wash out my recyclables before recycling? | It is helpful if items such as cans and glass jars are quickly rinsed prior to recycling especially to remove substantive food waste. |

Consultation on the New Plan for Development Across Bolsover District

On Monday 31 October 2016, Bolsover District Council will begin a six-week period of public consultation on the Consultative Draft Local Plan for the whole district.

Local residents and businesses from across Bolsover District are being invited to have their say on the Council's emerging Local Plan and how they want to see the area grow and develop.

The Plan sets out the overarching vision and objectives that will guide the development of the district together with the Council's Spatial Strategy for where development should go. The strategy emphasises the importance of sustainable development and balancing, social, economic and environmental implications.

The draft document contains proposed allocations for large housing and employment sites. It also includes policies on a broad range of topics designed to deliver the growth the District needs whilst protecting the environmental assets people value.

The Chairman of the Council's Planning Committee, Councillor Duncan McGregor said, 'There has been a huge amount of work undertaken to get us to this stage, and we are now ready to consult with the public to see what they think!'

Growth is our main priority, but it has to be sustainable growth and growth that will enhance and improve our District for the benefit of local communities'.

Copies of the draft Local Plan will be available to view on the Council's website, and at libraries and customer contact centres. Comments can be made electronically or in writing. In addition, the Council will be holding a series of 'drop-in' sessions, so that people have an opportunity to come along and discuss the proposals in the Plan. These will be held at:

| Venue | Date | Time |
|---|----------------------|-------|
| Barlborough Village Hall, High Street S43 4ET | Thursday 10 November | 4-7pm |
| The Assembly Rooms, Hill Top Bolsover S44 6NG | Monday 14 November | 4-7pm |
| The Arc High Street, Clowne S43 4BH | Thursday 17 November | 4-7pm |
| Creswell Social Centre Elmton Road Creswell S40 4BH | Tuesday 22 November | 4-7pm |
| Pinxton Village Hall Kirkstead Close NG16 6NA | Thursday 24 November | 4-7pm |
| Shirebrook Leisure Centre, Park Road, Shirebrook NG20 8JR | Tuesday 8 November | 4-7pm |
| Postmill Centre, Market Close South Normanton DE55 2EJ | Friday 25 November | 4-7pm |
| Tibshelf Village Hall, High Street, Tibshelf DE55 5NU | Friday 11 November | 3-6pm |
| The Community Centre, The Square, Whitwell S80 4NN | Friday 18 November | 4-7pm |

It is vitally important that people have their say, because the new Local Plan will help shape the District for the next 15 -20 years.

**The full survey findings are available on www.askderbyshire.gov.uk
Don't forget to return your form by Friday 25 November 2016**